



**Playing in the  
'Kent Invitational'**

**21-25 May 2008**

**Kent**

**England**



2007 Winner – Jan Nielsen

Our 4<sup>th</sup> year!! Congratulations to Jan for his 2007 victory and looking below at the 'Order of Merit' it is about time we had a new winner!

We are back to May for 2008 which I think is the best month of the year to play golf. There are 3 new courses this year. It all starts at 'The Westerham Golf Club' in North Kent which plays mainly through a forest. The second

round is at 'Dale Hill' golf club in East Sussex. For the final round we were meant to be going to France, however I got my timing all wrong and Kathrine is due to give birth to our second child on the 21<sup>st</sup> May. It would not be good to be in France on the day it arrives so we are going to play at the 'London Golf Club'. We'll do France in 2009! Travelling time should also be a lot less this year Both the Westerham and the London Club are only 30 mins from the hotel. Dale Hill is about the same distance as Hever.

Happy golfing

### *Order of Merit*

2005	Jan Nielsen
2006	Damian Armstrong
2007	Jan Nielsen

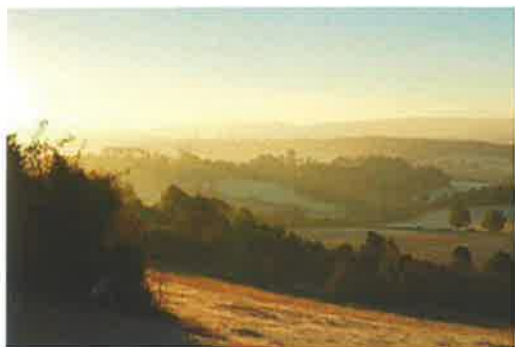


**We are back in the Black Horse Inn, good food, good beer, good times**



**The Black Horse Inn**

**Thurnham, Kent**



The Westerham Golf Club – Westerham, Kent

Thursday 22 May - Tee-off 10:00am

[www.westerhamgc.co.uk](http://www.westerhamgc.co.uk)



In 1987 the south of England was hit by a hurricane the destruction of which brought down a lot of trees. The damage created an area that looked ideal for a golf course and so 10 years later the Westerham Golf Club opened. I have never played here but the reviews are good and the club house looks nice!



Dale Hill Golf Club – Ticehurst – East Sussex

Friday 23<sup>rd</sup> May – Tee-off 11am – The Woosnam Course

[www.dalehill.co.uk](http://www.dalehill.co.uk)

A course designed by Ian Woosnam, one that is always in top condition offering fantastic views across the English countryside with just a little bit of Augusta in it. In parts it plays through trees and in other places it is open, plenty of opportunity to get the driver out. This is a buggy only golf course the rental of which is included in the green fee. It is not the longest course you will ever play but what it lacks in length it makes up for in design.



London Golf Club – Ash – Kent

Saturday 24th May – Tee-off 11am – The International Course

[www.londongolf.co.uk](http://www.londongolf.co.uk)

A Jack Nicholas designed venue and a good replacement to the course in France. The style is inland links and the club house makes the East Sussex National look like your garden shed. As for the quality of the course; it is ranked 65<sup>th</sup> in the country just one place below the East Sussex National.

The other course at the club, the 'Heritage', is a venue on the European Senior Tour calendar.



Hopefully you will enjoy the courses that I have selected for 2008; I think that they offer something for all levels of handicap. I have especially tried to select courses where it is impossible to take a 20 on the 18<sup>th</sup> hole!

Can I stress once again '**DRESS CODE**'. Cargo style trousers and shorts (i.e. those with external pockets) are not allowed on English golf courses and proper golf shoes must be worn at all times.

Enjoy the rest of the 2007 golfing season and I look forward to welcoming you back to Kent in May next year.

Let us all hope that the new arrival comes early.

